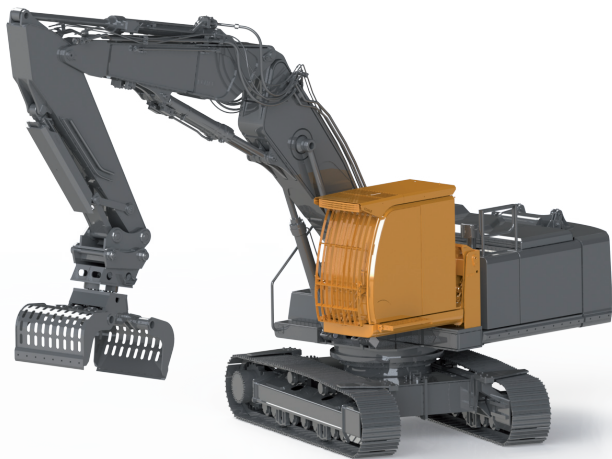


# TILTING CABIN – technology, safety & comfort



preferably with  
**PROTECTOR E4**



## KEY FACTS:

- **Ergonomics and comfort:**  
The tilting cabin ensures an ergonomic and comfortable seating position, making work significantly more relaxed and less stressful.
- **Stepless tilting up to approx. 30°:**  
After conversion, the cabin can be tilted steplessly up to an angle of inclination of approx. 30°. This is achieved by means of hydraulic cylinders with a load-holding valve.
- **The hydraulic cylinder** is optimally protected against external stresses thanks to its integrated design.
- **Can be easily combined** with our 'PROTECTOR E4' cab protection.
- **Optimised cabin position:**  
The modification measures will move the cab forward by approx. 350 mm, significantly improving the operator's visibility.
- **Simple Control:**  
Operation requires medium pressure. No additional controls are required.
- **Integrated emergency lowering:**  
An emergency lowering system is integrated for maximum safety. This can be activated both from inside the cabin and from the ground.
- **Adjustment of lines:**  
All relevant lines are adjusted and extended:  
Hydraulic hoses, air conditioning lines, heating hoses
- **Corrosion protection and appearance:**  
Once the work is completed, the entire conversion area is primed and painted to ensure corrosion protection and a high-quality appearance.

More products at:  
[cm-parts.com](http://cm-parts.com)

 [echlehartstahl](https://www.facebook.com/echlehartstahl)

 [echle\\_hartstahl](https://www.instagram.com/echle_hartstahl)

 [echle-hartstahl](https://www.linkedin.com/company/echle-hartstahl)

 [echle\\_hartstahl](https://www.tiktok.com/@echle_hartstahl)

 [EchleHartstahl](https://www.youtube.com/EchleHartstahl)

**ECHLE Hartstahl GmbH**  
Untere Zinne 6  
77709 Wolfach / Germany  
T: +49 7834 86 559 - 0

[info@echle.de](mailto:info@echle.de)  
[www.echle.de](http://www.echle.de)  
[www.cm-parts.com](http://www.cm-parts.com)

**ECHLE<sup>®</sup>**  
Intelligente Lösungen für Baumaschinen